

# State of Wyoming Corner Record

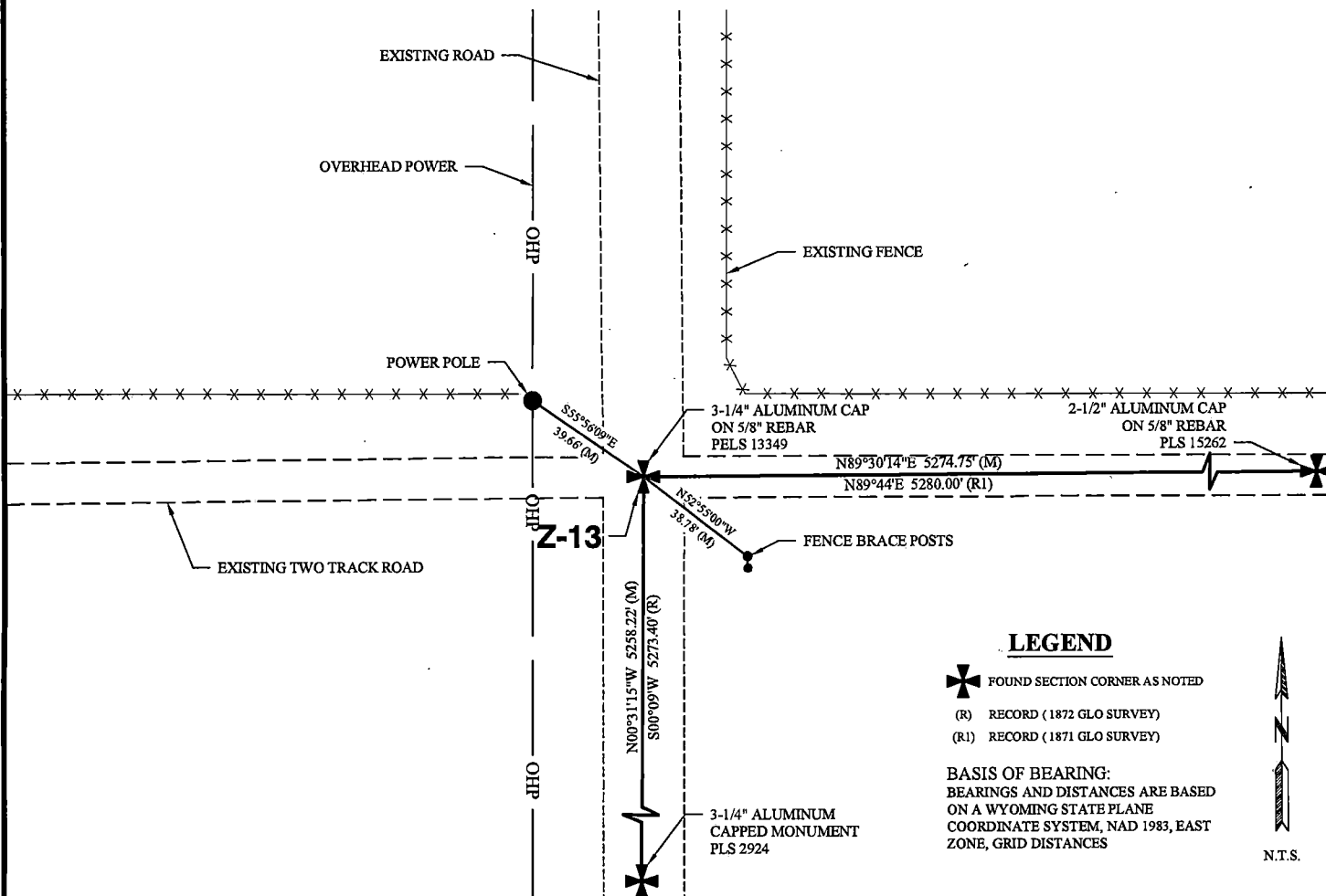
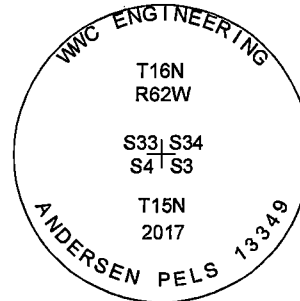
(In compliance with the CORNER PERPETUATION AND FILING ACT, Wyoming Statutes, 1997, Section 33-29-140, et seq., and the Rules and Regulations of the Board of Registration for Professional Engineers and Professional Land Surveyors)

Reverse side of this form may be used if more space is needed.

Record of original survey and citation of source of historical information (if corner is lost or obliterated.) Description of corner monumentation evidence found and/or monument and accessories established to perpetuate the location of this corner. Sketch of relative location of monument, accessories, and reference points with course and distance to adjacent corner(s) (if determined in this survey). Method and rationale for reestablishment of lost or obliterated corner.

**EVIDENCE RECORD:** 1871 GLO Survey: N89°44'E on true line between sections 4 & 33, 80.00 chains. Set a white sand stone 18"x7"x6" for corner to sections 3, 4, 33 & 34.

**EVIDENCE FOUND:** October 2017: Sand stone from 1871 GLO survey not found. Accepted intersection of north-south road and east-west two track road as best available evidence for the corner to sections 3, 4, 33 & 34. Set a 3 1/4" aluminum cap marked as shown on a 5/8" rebar, 24" long, 6" below gravel road surface.



### LEGEND

- FOUND SECTION CORNER AS NOTED
- (R) RECORD (1872 GLO SURVEY)
- (R1) RECORD (1871 GLO SURVEY)

**BASIS OF BEARING:**  
BEARINGS AND DISTANCES ARE BASED ON A WYOMING STATE PLANE COORDINATE SYSTEM, NAD 1983, EAST ZONE, GRID DISTANCES

N.T.S.

Date of Field Work: October 19, 2017

Office Reference: 2017-135

### CROSS INDEX DIAGRAM

	1	2	3	4	5	6	7	8	9	10	11	12	13	14	15	16	17	18	19	20	21	22	23	24	25	
A																										A
B																										B
C		6			5				4					3					2						1	C
D																										D
E																										E
F																										F
G		7			8			9					10					11						12	G	
H																										H
J																										J
K																										K
L		18			17			16					15					14						13	L	
M																										M
N																										N
O																										O
P		19			20			21					22					23						24	P	
Q																										Q
R																										R
S																										S
T		30			29			28					27					26						25	T	
U																										U
V																										V
W																										W
X		31			32			33					34					35						36	X	
Y																										Y
Z																										Z

Land Surveyor / Firm / Address  
Clint E. Andersen

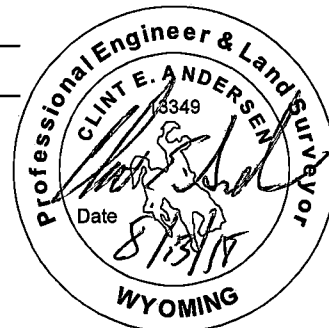
WWC Engineering

51 N. 15th Street, Suite 1

Billings, MT 59101

Telephone: (406) 894-2210

This corner record was prepared by me or under my direction and supervision.  
SEAL & SIGNATURE



Corner Name: Southeast Corner Section: 33 T 16N R 62W; 6TH P.M. Cross-Index No.: Z-13  
SBRPEPLS/PLSW: March 1994; PLSW January 1998



REC # : 739850

RECORDED 10/1/2018 AT 1:30 PM BK# 2598 PG# 284

Debra K. Lee, CLERK OF LARAMIE COUNTY, WY PAGE 1 OF 1